



## A snapshot of Avila College's history

Avila College in Mount Waverley, one of Melbourne's south eastern suburbs, is a leading provider of Catholic education for young women.

Established in 1965, the College has experienced an incredible journey since its humble beginnings. From an initial enrolment of 110 girls in Form 1 and 2 (Year 7 and 8) the College has grown tenfold to become a leading provider of Catholic education for young women. It is now one of the largest Catholic secondary schools for girls in the state with an enrolment of more than 1100 students. Testimony to the Avila's success

story is that past students can be found in all corners of the globe pursuing a diverse range of careers and vocations and making a meaningful contribution to the community/world in which they live.

The College was established in 1965 by the parishes of Mount Waverley, Glen Waverley, Syndal, Mulgrave and Jordanville who invited the Presentation Sisters to administer a Catholic college committed to the education of girls.

A relatively young school, Avila has become a vibrant, outward looking Catholic secondary college, always pursuing standards of excellence as it searches to give meaning to its motto 'Ecclesiae Filia' (Daughters of the Church).

Avila has benefited from two distinct eras of leadership since

1965 – those of the Presentation Sisters and lay principals:

- Sister Patricia Carroll (1965 – 1970)
- Sister Raymonde Taylor (1970 – 1973)
- Sister Josepha Dunlop (1974 – 1979) (dec.)
- Miss Patricia Ryan (1980 – 1986)
- Mrs Maureen Thompson (1987 – 1995)
- Ms Filomena Salvatore (1995 – 2005) (dec.)
- Ms Liz Gleeson (2006 – 2010)
- Ms Louise Gunther (2011 - )

The College initially operated from temporary classrooms in the grounds of St. Leonard's Catholic Primary School in Glen Waverley before moving to its present location in Charles Street, Mount Waverley at the start of 1966.



The College initially operated from portable classrooms in the grounds of St. Leonard's Catholic Primary School in Glen Waverley before moving to its present location in Charles Street, Mount Waverley at the start of 1966.

In those early weeks of the 1966 school year, the campus resembled more of a building site than a school. Construction of the single classroom block was still underway as students attended class. Initially the only buildings were the classroom block and the toilet block. There was no asphalt or concrete outside the building to prevent the famous Mount Waverley clay clinging first to shoes and then to the tiled floors once winter began. The students wore 'indoor' shoes, expensive brown 'slip-ons', which they hated and which, after a while, gave the rooms a pervasive odour of feet! The grounds still looked very much like the farm paddocks they had been, with a range of small wildlife, including the occasional copperhead snake.

Avila's philosophy is based on the ideal that students learn well when they are respected and valued. The curriculum, together with a sensitive Pastoral Care Program, is designed to provide each student with the opportunity for success and growth towards a realisation of her individual potential. Each student is encouraged to grow towards a womanhood of Faith, Hope and Love. The needs of the individual are of primary concern, every student is respected, and challenged to achieve personal success. Behaviour and discipline policies and procedures are based on Christian values which uphold the dignity of the person.

The Avila staff provides excellent role models for students in a world of ever-widening opportunities for women. They teach, guide, encourage and challenge students to achieve academic excellence in preparation for life in the 21st century.

The College is proud of its record of developing strong and capable leaders and 'can do' young women who pursue a diverse range of careers and vocations in all corners of the globe.



*Sister Patricia Carroll  
1965 - 1970*



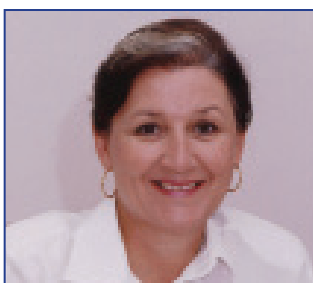
*Sister Raymonde Taylor  
1971 - 1973*



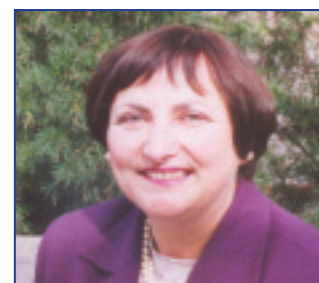
*Sister Josepha Dunlop  
1974 - 1979*



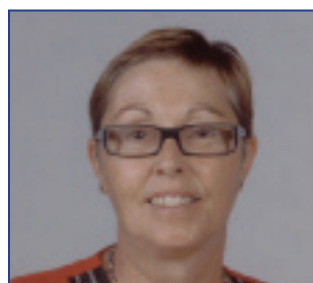
*Miss Patricia Ryan  
1980 - 1986*



*Mrs Maureen Thompson  
1987 - 1995*



*Ms Filomena Salvatore  
1995 - 2005*



*Ms Liz Gleeson  
2006 - 2010*



*Ms Louise Gunther  
2011 -*